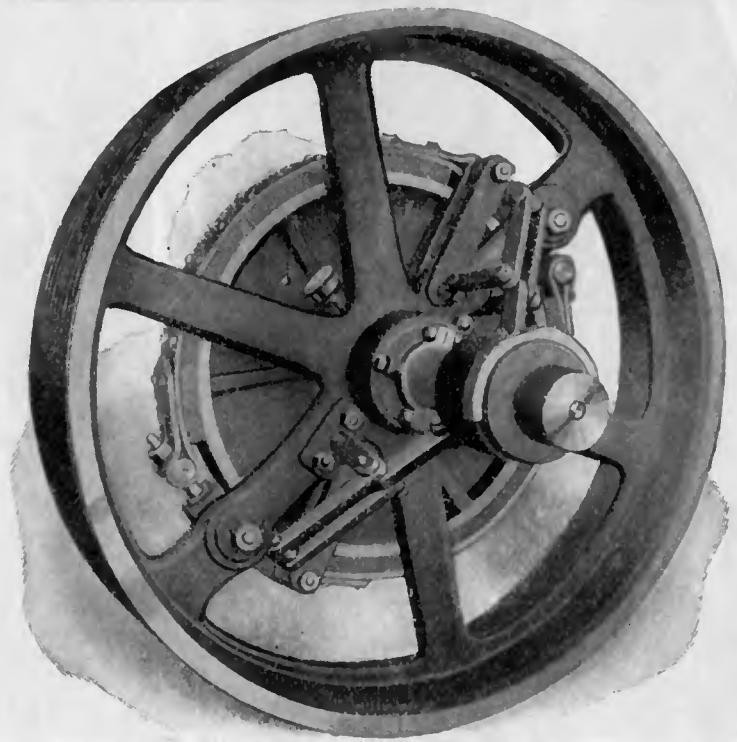




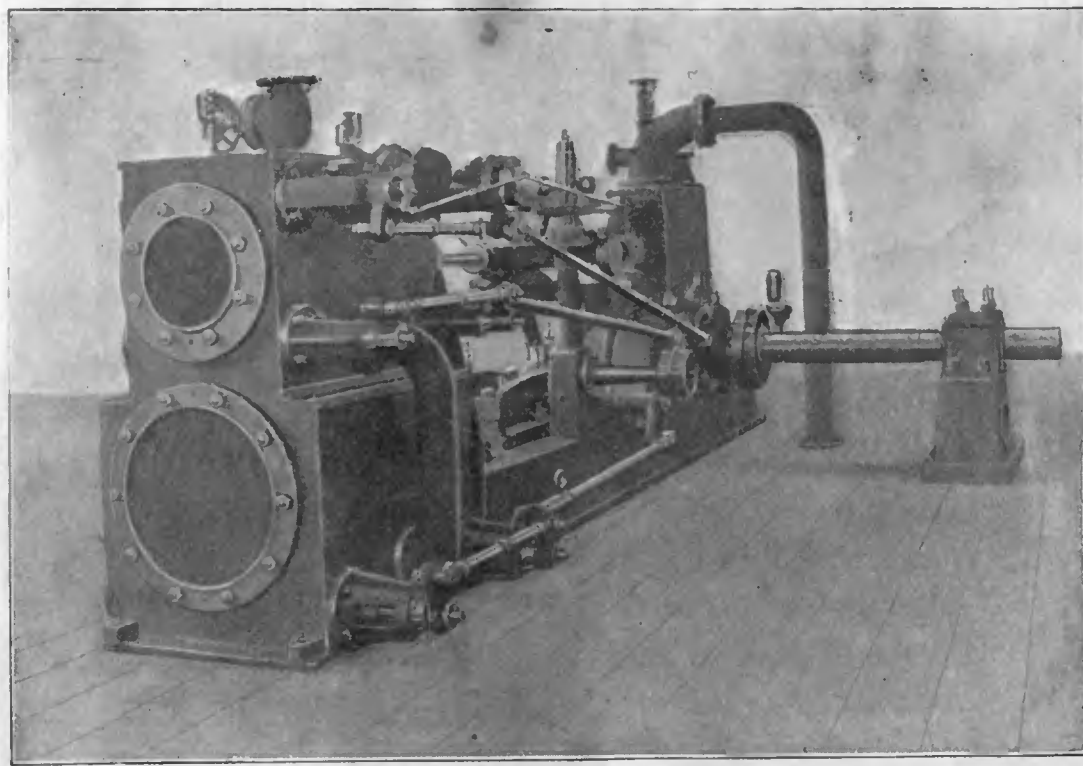
H. J. H. KING & Co.

NEWMARKET ENGINEERING WORKS,

- - NAILSWORTH



KING ROPE PULLEY CLUTCH.



HORIZONTAL KING ENGINE.

Patented Specialities :—

- STEAM ENGINES.
- CLUTCHES.
- TURBINES.
- GOVERNORS.
- SAUSAGE FILLERS.
- MALTING MACHINERY.

Telegrams :—KING, ENGINEERS, NAILSWORTH.

A B C 4th Edition and A 1 Codes.

Telephone 312.

TELEPHONE No. 214

JAMES BYARD & SONS,

CONTRACTORS FOR ROAD, SEWER,

AND WATER WORKS,

FACTORY, BOILER AND FURNACE WORK,

AND GENERAL BUILDING



Office and Premises :—

STROUD ROAD,

GLOUCESTER.

Estimates given for all classes of Work at any distance.

THE COOMBE VALLEY BREWERY COMPANY,

WOTTON-UNDER-EDGE,

Brewers, Maltsters, Bottlers . . .

and Aerated Water Manufacturers.

PRIZE MEDAL, BREWERS' SHOW, 1903.

PRICE LIST ON APPLICATION.